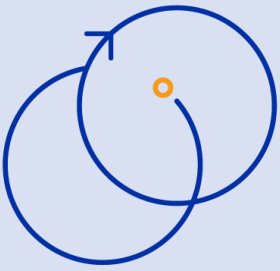




This project is funded by the European Union's Asylum, Migration and Integration Fund



# MATCH

## HIRING AFRICAN TALENTS

The Migration of African Talents through Capacity building and Hiring (**MATCH**) project aims at providing **skilled talents to private sector companies** whose needs for qualified staff cannot be satisfied by the offer available on the EU labour market. The MATCH project, implemented from January 2020 to December 2022, **supports companies from Belgium, Italy, Luxembourg, and the Netherlands** with the sourcing and recruiting of **African talents from Senegal and Nigeria**, two countries offering a surplus of qualified professionals. In addition, MATCH also implements complementary activities such as **skills development, capacity building and knowledge sharing**.

Over a period of **34 months**, the results of the project thus far have been:



**Involvement of more than 10 project partners in 6 countries**, including public employment services, employers, private recruiters and diaspora experts to address labour shortages through talent mobility schemes.



**Pre-selection and recruitment of talents:** launch of 118 recruitments for 29 EU companies, 579 CVs examined, 366 CVs pre-selected by the project, 137 talents invited to the companies' recruitment procedures, 7 recruitments completed so far.

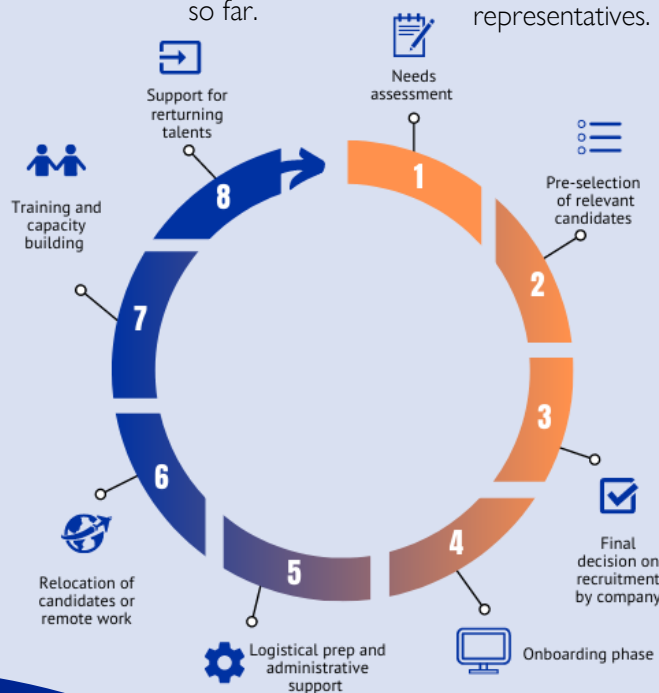


**Delivery of targeted assistance to 97 talents** for soft skills enhancement, job interview preparation, and cultural orientation & **Delivery of 8 trainings for employers** on how to hire and welcome international talents for more than 100 private sector representatives.



**Organization of 14 capacity building activities for 288 participants** to establish legal pathways between Africa and the EU. Public stakeholders received training on how to assess labour markets and on how to match labour supply with demand. Companies received training on business sustainability, peer-to-peer exchange, and the transfer of technical know-how.

### PROJECT CYCLE



### IN PARTNERSHIP WITH



For more info, please contact [match@iom.int](mailto:match@iom.int)

IOM Belgium and Luxembourg,  
Rue Montoyer 40, 1000 Brussels